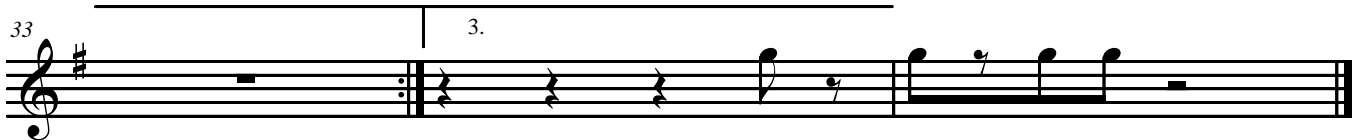


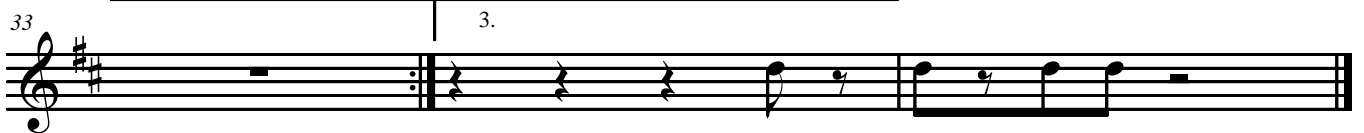
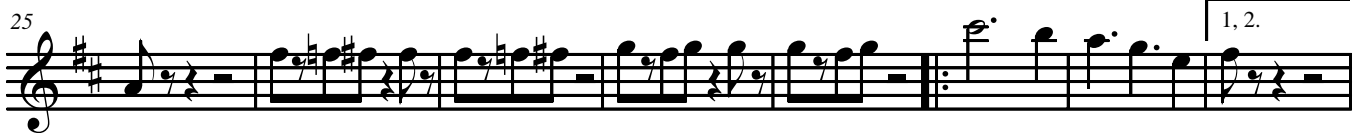
Soprano Sax.

Snow Star



Alto Sax.

Snow Star



Trombone

Snow Star



9



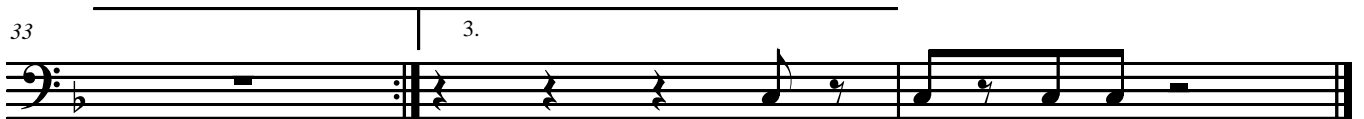
17



25

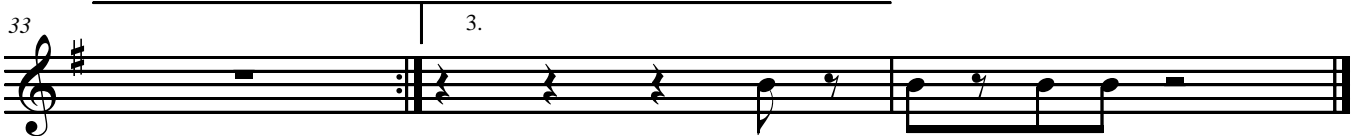


33



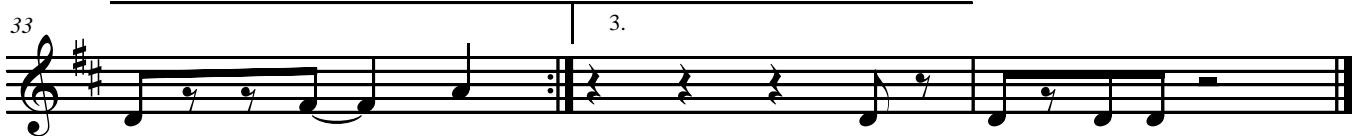
Tenor Sax.

Snow Star



Baritone Sax.

Snow Star



Trombone

Snow Star



9



17



25



33



Baritone (T.C.)

Snow Star



9



17



25



33



Tuba

Snow Star



Snow Star

1

The musical score for "Snow Star" is presented in a system of ten staves. The first two staves are treble clefs, the third and fourth are also treble clefs, the fifth is a bass clef, the sixth is a treble clef, the seventh is a treble clef, the eighth is a bass clef, and the ninth and tenth are bass clefs. The key signature is one sharp (F#) and the time signature is common time (C). The score begins with a first-measure rest in the first staff, followed by a melodic line in the second staff. The third and fourth staves contain accompaniment for the first two staves. The fifth staff has a first-measure rest, followed by accompaniment for the sixth staff. The seventh staff has a first-measure rest, followed by a melodic line. The eighth staff has a first-measure rest, followed by accompaniment for the seventh staff. The ninth and tenth staves have first-measure rests, followed by accompaniment for the eighth staff.

Snow Star

This musical score for "Snow Star" is written for piano and guitar. It begins with a treble clef, a key signature of one sharp (F#), and a 2/4 time signature. The piano part is written in the right hand, while the guitar part is written in the left hand. The score is organized into two systems, each containing four measures. The piano part features a melody of quarter and eighth notes, often with slurs and ties. The guitar part provides a rhythmic accompaniment with chords and single-note lines, including a prominent eighth-note pattern in the lower register. The piece concludes with a final chord in the piano part.

This musical score for 'Snow Star' on page 3 consists of two systems of staves. The first system includes a vocal line (treble clef) and a piano accompaniment (treble and bass clefs). The second system includes a vocal line (treble clef) and a piano accompaniment (bass clef). The key signature is one sharp (F#), and the time signature is common time (C). The score is marked with a '9' at the beginning of each system, indicating the measure number. The piano accompaniment features a steady eighth-note bass line and a more active treble line with various rhythmic patterns and slurs.

Snow Star

The musical score for "Snow Star" is presented in a system of seven staves. The first staff is marked with a 4/4 time signature and a key signature of one sharp (F#). The score is divided into measures, with measure numbers 4, 13, and 14 indicated at the beginning of their respective staves. The notation includes various rhythmic values such as quarter notes, eighth notes, and rests. The piece features a melodic line in the upper staves and a bass line in the lower staves, with some staves containing chords or accompaniment. The overall structure is a 4-measure phrase, with the first system containing measures 4, 5, 6, and 7, and the second system containing measures 13, 14, 15, and 16.

This page of the musical score for "Snow Star" contains measures 17 through 20. It is organized into three systems, each with four staves. The first system (measures 17-20) features a vocal line in the top staff (treble clef, key signature of one sharp) and a piano accompaniment consisting of three staves (treble and bass clefs, key signature of one sharp). The second system (measures 17-20) features a piano accompaniment consisting of three staves (treble and bass clefs, key signature of one sharp). The third system (measures 17-20) features a piano accompaniment consisting of three staves (treble and bass clefs, key signature of one sharp). The notation includes various rhythmic values such as eighth and sixteenth notes, rests, and dynamic markings.

Snow Star

The musical score for "Snow Star" is presented in two systems. Each system contains four measures of music across seven staves. The first system includes a vocal line (top two staves) and a piano accompaniment (bottom five staves). The second system features a vocal line (top staff) and piano accompaniment (bottom six staves). The key signature is one sharp (F#), and the time signature is common time (C). Measure numbers 21 are indicated at the beginning of the third and fifth staves in both systems. The notation includes various note values, rests, and articulation marks.

